

ROMAN[®]

REFINED SHOWERING

PROJECT SPECIFICATION GUIDE





Who we are

- 01 - Who we are
- 05 - Sustainability
- 07 - British Manufacturer
- 09 - Fabrication
- 11 - High-Quality Material
- 13 - Design & Customer Service
- 15 - International

Projects & Capability

- 17 - Projects
- 23 - Vanity Units & Basins
- 25 - Pod Manufacturers & Glass protection
- 27 - Glass & Metal Colour Options
- 29 - Leisure Solutions
- 31 - Tray Options
- 33 - Hinge Options
- 39 - Bracket Options
- 43 - Handle Options
- 49 - Aluminium Wall Profiles
- 51 - Round Bracing
- 53 - Square Bracing System
- 57 - Sliding Door systems
- 59 - Sealing systems
- 61 - Accessories

Bespoke & Guarantee

- 63 - Bespoke
- 64 - Guarantee Guide

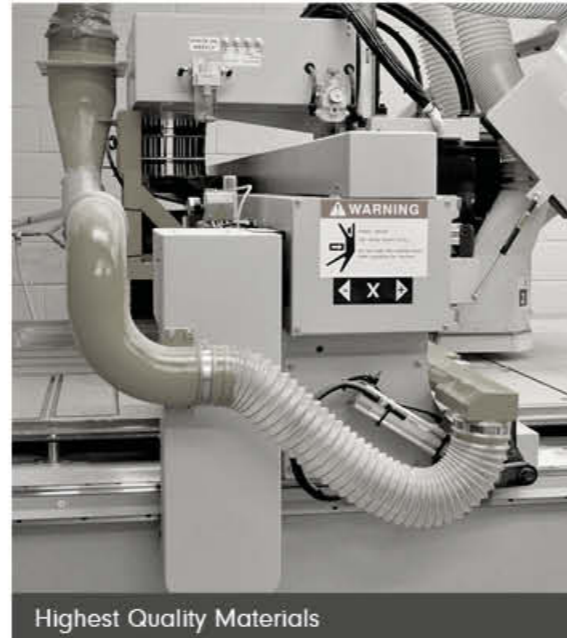
WHO WE ARE

Roman has been designing and manufacturing showering solutions for nearly 40 years, and is home to the UK's largest shower manufacturing plant. All Roman products are designed and created in Britain, offering the ultimate in quality, precision and craftsmanship. Roman's diverse and versatile collection of products encompasses something for every style and shape bathroom - no matter what the budget. Roman is a reputable and well established UK Brand, supplying showering products to 72 International markets.





In-house customer support network



Highest Quality Materials

39 YEARS OF
UK DESIGN & MANUFACTURING
EXCELLENCE

GROWTH ACROSS
72 INTERNATIONAL
MARKETS



Nationwide Technical Service representatives



Roman Stone Shower Trays are inherently Anti-Slip, carrying the highest national standard of DIN Class C



Innovation & exceptional product design

Award Winning

Manufacturing & Innovation

Our products and ranges have won multiple awards including The Queen's Award for Enterprise - International Trade, in 2017 and again in 2022.

We have also been identified as one of London Stock Exchange's 1000 Companies to Inspire Britain. We are extremely proud to be recognised as one of the UK's fastest growing and most dynamic small and medium sized businesses.

Roman is included in the FT1000, which is the list of Europe's Fastest Growing Companies, compiled by the Financial Times. We have also been awarded the Bathroom Safety Compliance Award 2018 by the NHIC.



Sustainability
Winner of Best Bathroom Product of the Year 2022

The Queen's Awards for Enterprise-International Trade

Winner of the Bathroom Manufacturer Association Circular Economy Award November 2021

Trust

Buy with Confidence

All Roman products are designed and created in the UK, offering the ultimate in quality, precision and craftsmanship. All Roman's manufacturing processes are carried out at our UK Manufacturing Plant and Headquarters and meet and exceed approved UK and European testing standards.

For complete peace of mind, all Roman Shower Enclosures, Wetroom Panels and Bath Screens are accompanied by a fully service backed TrueLife Lifetime Guarantee.



Products Designed for All



All products are tested to EN14428



Toughened safety glass



All products offer exceptional levels of style and performance



Aluminium used is light, strong and requires minimal maintenance



ALL WASTE IS SEGREGATED INTO RECYCLABLES & NON-RECYCLABLES

Shower Trays and Basins are made from Roman Stone which is manufactured using natural materials - mostly recycled stone and resin. Roman Stone is easily recycled at it's end of life and can be reground and reused back at it's original value and purpose.

ISO 14001 is a crucial pathway into sustainable manufacturing. It introduces the concept of measurement into every process and action. Targets and goals are constantly set to implement continuous improvement. **ISO 9001** is a globally recognized standard for quality management. It helps organizations of all sizes and sectors to improve their performance, meet customer expectations and demonstrate their commitment to quality.

Roman achieved carbon neutral certification from the Carbon Trust in 2021. Roman have achieved certification to cover Scopes 1, 2 and 3. Audits, measurement and ongoing Carbon reduction are embedded into all activity.

All Roman products are proudly made in Britain and carry the Mark.

Circular economy principles are embedded throughout Roman's supply chain which entirely focuses upon very high levels of recycling before and after the life of the product.

All Roman products are manufactured from recycled materials

All Roman Products can be easily recycled at end of life

At their end of life, materials can be used again for production at their original value

All Roman Products meet and exceed approved testing standards. A key facet of sustainability is adherence to Standards - this is often overlooked. The use of substandard materials or products simply means they will fail and need to be replaced.

100% of Roman aluminium is recycled material - empirically proven due to Roman's two aluminium plants.

Glass is currently running at 80% recycled content. This has moved sharply upwards over the last 5 years and we anticipate to be able to move to 100% over the next 3 years. Glass is extremely easy to recycle and reuse.

All packaging is manufactured from corrugated cardboard which is already 100% recycled before use and extremely easy to recycle after use.

In 2022 Roman physically returned and recycled 700,000 square metres of packaging.

All brass is 100% recycled material before use.

Roman is a committed member of the United Nations Global Compact and the Sustainable Development Goals are embedded in all processes.

TRAYS

ISO14001 ISO9001

CARBON NEUTRAL

MADE IN BRITAIN

CIRCULAR ECONOMY

UKCA/ CE MARK

ALUMINIUM

GLASS

PACKAGING

BRASS

UNGC



Recycling your product

Packaging

As an ISO14001 Registered Company, Roman takes recycling very seriously at all levels. All cardboard is already manufactured from recycled paper, but our packaging itself is designed for recycling. Please ensure that the cardboard packaging is taken to a local cardboard recycling point or to a local recycling depot.

End of Life (EOL)

EOL recycling is taken into account from the initial design stages to ensure all aspects of the Roman products can be recycled for future use. The Aluminium, Brass Alloys, Glass (and Solid Surface Material with Roman Stone Trays) can be easily recycled at your local Licensed Recycling Centre (LRC). If you are unable to access an LRC, then Roman can arrange to coordinate a pick-up of your product for a modest transport charge.



LEADING UK MANUFACTURER

in Bathroom Industry

All of our manufacturing processes are carried out at our UK Manufacturing Plant and Headquarters and meet and exceed approved UK and European testing standards.

By any definition Roman is now the clear UK Market leader, and perhaps more importantly for the North East of England, one of the few strong and genuine Manufacturers within the UK and European Bathroom Industry.

Roman has achieved this strong position in the Market Place by consistent and creative product innovation and has produced significant growth across all UK Market sectors and in the past 5 years, strong growth in International Markets. Roman's manufacturing capability and vast range of products has made the Brand increasingly strong in key International Markets.

Roman only use the finest quality of materials to guarantee unsurpassed quality and certainty in our manufacturing process, ensuring all of our products reach exceptional levels of style and performance.



ONLY USE THE FINEST QUALITY OF MATERIALS



UK MANUFACTURER



MOULDING & FABRICATION

Roman has had a long established Solid Surface (engineered Stone) Moulding Plant on its main manufacturing site within our head office. This facility includes rapid prototyping; CNC precision mould making; a large variety of different moulding methods for our extensive range of shower trays; and a huge oven and fabrication area for the highest quality finishing. Having the mould manufacturing in-house gives flexibility in terms of lead times and costs of moulds – depending upon the particular application and volumes of trays.

AREAS OF USE

- Fitted bathroom furniture
- Leisure / spa facilities
- Hotel bathroom fittings
- Table tops for restaurants / hotels
- Updating work surfaces

Roman Stone shower trays are manufactured from solid surface and are inherently anti-slip and carry the highest international standard of **DIN Class C**.

Since 2014 Roman has added Solid Surface fabrication to this facility. This allows precast Solid Surface sheets (of any thickness required) to be fabricated to precise Project requirements whether this be a small basin unit through to a full height pod unit. This includes hidden joints, hidden fixings and any corner or finishing details required. These fabrications can be designed to suit any requirement and the fabrications can be as flexible as the material itself. Any structural or reinforcement requirements can also be supplied in whatever material and whatever strength specified.

If you submit drawings, or simply ideas, we would be delighted to offer you bespoke quotations and design ideas to suit your specification and ambitions.

BENEFITS:

- Seamless design – no grooves or edge work, presenting a completely flawless look
- Highly resistant to staining and discolouration
- Anti-bacterial



20 YEARS
AT THE **FOREFRONT OF**
SOLID SURFACE TECHNOLOGY



HI-MACS



DESIGN, EXTRUDE, ANODISE AND FABRICATE

light, strong and requires minimal maintenance

At Roman we carefully design, extrude, fabricate and anodise all our aluminium profiles. We use aluminium because it is; light, strong and requires minimal maintenance. The anodising process increases corrosion resistance, product durability and further enhances the material properties. Our specialist anodising offers a bright chrome like finish which is significantly in excess of standard aluminium finishing.

This aluminium capability is unrivalled and offers limitless design and colour options.



BRIGHT POLISHED ALUMINIUM



THE FINER DETAIL

We offer an extensive collection of components including different colours, shapes and styles to create your own bespoke look. Great care and attention is paid when choosing each component to ensure they are of outstanding quality, right down to the finer detail.

We carefully select our glass suppliers and all our enclosures feature toughened safety glass. This is a heat treatment to increase the glass strength to make it around **5 times stronger than normal glass**. If the glass were to break due to impact, it would shatter into lots of small pieces which are much less dangerous and will help avoid any cuts or injury. All glass is strictly tested in accordance with EN 14428.

BRASS & GLASS





DESIGN & INNOVATION

Roman employ a dedicated in-house Design Team who are based at our purpose built Design Centre. They add flexibility to our research, development and innovation.

Roman's key collections are available in BIM, CAD, Virtual Worlds and EQ Software. Our Design Team are leaders in innovation and design and can provide accurate technical CAD drawings from customers' requirements and drawings, bringing their design ideas to life.

Roman is experienced in large Project work and frequently create bespoke solutions to suit individual customers' briefs.

Our products are carefully designed for all. We consider different users' needs to give totally effortless entry to the entire family. Whether you would like door-less entry, level access, handles that can be used with a flat hand or a wider aperture, we have something that will work with your space all finished with a stylish designer look.

Roman has invested in BIM and their key collections of Shower Enclosures, Wetrooms, Walk-in Enclosures and Shower Trays are available in the BIM format.



Download BIM files now at
www.roman-showers.com

CUSTOMER SERVICE

Our dedicated Customer Services Team is based at our headquarters in North East England. We ensure that each member of the team is extensively trained to provide in-depth knowledge of the manufacture and installation of Roman's collection of products.

This team are here to support each purchase at every stage; from initial enquiry through to after sales care and advice. Roman employs over 20 full time members of staff in our Customer Support Centre.



UK & EUROPE

ROMAN HEADQUARTERS

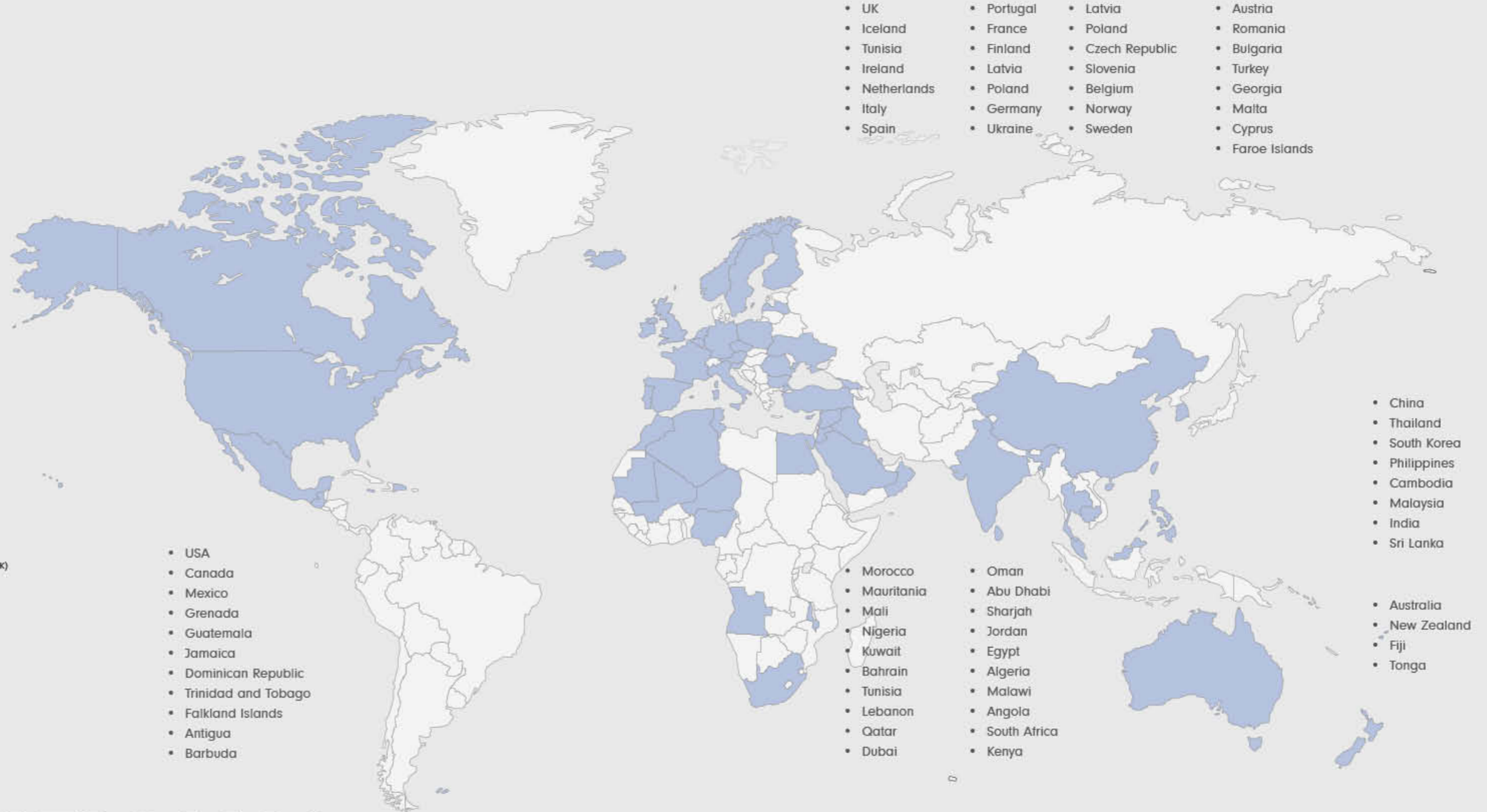
Roman Limited
 Whitworth Avenue,
 Aycliffe Business Park,
 County Durham,
 DL5 6YN
 United Kingdom
 GENERAL RECEPTION:
 Tel: +44 (0) 1325 311 318
 ukprojects@roman-showers.com

ROMAN IRELAND

Roman Ireland
 W10F
 Ladytown Business Park
 Naas
 County Kildare
 Ireland
 IRELAND SALES:
 Tel: +353 (0) 45 408 118
 irelandsales@roman-showers.com

ASIA PACIFIC

Roman Asia Sdn. Bhd Reg No: 201101013463 (941603-K)
 No.6, Jalan Olivin,
 Taman Industri Sungai Purun,
 43500 Semenyih,
 Selangor Darul Ehsan,
 Malaysia
 ASIA SALES:
 Tel: +60 (3) 8727 8816
 romanasia@roman-showers.com



INTERNATIONAL

ENGAGE WITH US IN MULTIPLE LANGUAGES:



GROWTH ACROSS
72 INTERNATIONAL
 MARKETS

USED IN MANY OF THE FINEST
HOTELS WORLDWIDE

Roman is the leading UK and European shower manufacturer and as such our dedicated International team are vastly experienced in dealing with large projects overseas and frequently create bespoke solutions to suit individual customers' briefs. The multi-lingual department has specialist members of staff who speak a number of languages between them, including English, Spanish, French, German and Italian.

We have worked on Projects Worldwide, most notably across Europe, the Americas, Asia Pacific and the Middle East. Our products are manufactured in our UK headquarters, Roman also have a showroom and manufacturing facility set up to serve the Asia Pacific market, Roman Asia, which is based in Kuala Lumpur.



PROJECT REFERENCES

HOTELS & PROJECTS

NATIONAL HOUSE BUILDERS

Currently specified by over 100 UK House Builders



Hilton

	UK • Dublin • Leeds • Nottingham • London Paddington • London Tower Bridge	CROATIA • Imperial Dubrovnik GERMANY • Kiel PARIS • La Defense
--	--	--

	UK • Abingdon Oxford • Peterborough • Old Trafford cricket ground • Snowdonia • Birmingham	• Bristol • Glasgow DENMARK • Faroe Islands
--	--	---

	UK • Birmingham Royal Angus • Kensington Queens Gate • Nottingham • Oxford Belfry • Sheffield • Kensington	• Bristol • Coventry • Nottingham Gateway • Westland • Edinburgh • Leicester
--	---	---

	UK • Blackpool • London Ealing • Rotterdam • Blackpool • Abbey Street Nuneaton • Waterloo Road	GERMANY • München NETHERLANDS • Poortgebouw Utrecht LATVIA • Riga
--	---	---

IHG®

	UK • Barrow-in-Furness • Belfast • Birmingham • Burton Upon Trent • Canterbury	FRANCE • De Lormont • Nice IRELAND • Derry • Dublin	MALTA • St George's Bay SWITZERLAND • Zürich		UK • Belfast • Harrogate • Marlow • Newcastle-Upon-Tyne • Plymouth
	UK • Ashford • Birmingham • Hemel Hempstead • Inverness • Leicester	IRELAND • Dublin			UK • Brighton • Cardiff • Chester • Dundee • Leicester
	UK • Cardiff Bay • Edinburgh • Glasgow • Oxford • Solihull				UK • Edinburgh

ACCOR

				FRANCE • Brive • Le Coudray-Montceaux • Perpignan
	BELGIUM • Ypres FRANCE • Annecy • Gardonia • Montparnasse	• Nice • Orleans • Paris Orly • Paris Porte de Versailles • Paris Roissy • Strasbourg	GERMANY • Hamburg ITALY • Milan NETHERLANDS • Amsterdam	NIGERIA • Lagos SPAIN • Madrid • Seville

OTHER BRANDS





PROJECT REFERENCES

INDEPENDENT HOTELS & PROJECTS

UK

- Alhambra Hotel, London, UK
- Badgers Brook, Wales, UK
- Baileys Millennium Hotel, London, UK
- Barnsley House, Barnsley, UK
- Battersea Rise, London, UK
- Brighton House Hotel, Brighton, UK
- Caim Station Aberdeen, UK
- Canada Lodge and Lakes, Cardiff UK
- Canada Water - Project Light, London, UK
- Canto Court, London, UK
- Cedars, Green King, Devon, UK
- Charter Place, Uxbridge UK
- Chilworth Manor, Southampton, UK
- Corn Exchange Manchester, UK
- Cottons Hotel, Cheshire, UK
- Crerar Deeside Inn, Scotland, UK
- Elgin Crescent, London, UK
- Formby Hall, Liverpool, UK
- Grantley Hall Ripon, UK
- Great Portland Street, London, UK
- Hogarths Stone Manor, Worcestershire, UK
- Hotel Gotham, Manchester, UK
- Kingston University, London, UK
- Lengard Ltd, Kew Gardens, UK
- Liberty Point Student Accommodation, UK
- Lygon Arms, Worcestershire, UK
- Midland Hotel, Morecambe, UK
- Monkey Island Estate, Berkshire, UK
- Mottram Hall, Mottram, UK
- North Queens Ferry, UK
- Old Thorns Golf & Country Club, Liphook, UK
- One The Brayford, Lincoln, UK
- Oulton Hall, Leeds, UK
- Paramount Hotel, Nottingham, UK
- Q Hotels, Dunston, UK
- Redworth Hall, Newton Aycliffe
- Roxburghe Hotel & Golf Course, Scotland, UK
- Royal Arden Hotel, Stratford-upon-Avon, UK
- Royal British Hotel, Edinburgh, UK
- Royal Holloway, London, UK
- Slaley Hall, Hexham, UK
- St Gillies Hotel London North, UK
- Tewksbury Hotel, Tewksbury, UK
- The Grand Hotel York, York, UK
- The Grove, Gosforth, UK
- The Lensbury, Middlesex, UK
- The Lowry Hotel, Manchester, UK
- Trinity Riverside Manchester, UK
- University Arms Hotel, Cambridge, UK
- Wentworth Homes, Surrey and Berkshire, UK
- Western Gateway, London, UK
- White Horse Hotel Dorking, UK
- The Old Ground Hotel, Ennis, Ireland
- The Windsor Hotel, Belfast, Ireland

IRELAND

- Ballymun, Dublin, Ireland
- NIAS, Enniskillen, Northern Ireland
- Oisín House, Dublin, Ireland
- Project Trinity, Ballsbridge, Dublin, Ireland
- Qub Student Accommodation, Belfast, Ireland
- Queens University, Belfast, Ireland
- Royal Belfast Golf Club, Belfast, Ireland
- The Mespil Hotel, Dublin, Ireland
- The Old Ground Hotel, Ennis, Ireland
- The Windsor Hotel, Belfast, Ireland



INTERNATIONAL

ABU DHABI

- Bateen Marina Resort Development
- Capital Plaza Hotel
- Lea Hotel
- Luxurious Residential Tower

DUBAI

- Jumeirah Residences
- Lotus Hotel
- Tijara Town

FRANCE

- Chantier Beaulieu, Nice
- Gare St Roch, Montpellier Appart'City
- Hôtel Amiraute, Ajaccio, Corsica

GIBRALTAR

- Waterport Terrace, Gibraltar

HONG KONG

- Hing Shing St. Project
- Kau to Shan 108
- Man on Shan 338,
- Tuen Mun 4C
- Gianni Cove Project, Tin Shui Wan

ICELAND

- Guldsmeden Hotels, Reykjavik
- Hotel Geysir, Iceland

KINGDOM OF TONGA

- Reef Resort Vava'u Hotel

MALAYSIA

- Damai 88, Kuala Lumpur
- Geo 88 Condominium, Gotong Jaya
- Glenmarie, Kuala Lumpur
- Hap Seng KLCC (Alia)
- Laguna, Langkawi
- Meru Semi-D Residents, Ipoh
- Pengalan Super-Link Residents, Ipoh
- Peony Square Condominium Cameron Island
- Petronas Cabin Houses Rapid, Johor
- Zinma Residents Bungalow
- TUN H.S. Lee Hotel, Kuala Lumpur
- Ozo Hotel (Penang)
- Paramount Batu Kawan, Ultrapolis
- Paramount Sungai Petani, Semi-D Bukit Banyan
- Paramount Batu Kawan, Sinaran
- The Granite Luxury Hotel (Penang M Summit Group)
- Indigo Hotel Kuala Lumpur
- SCP Kensho Condominium Kuala Lumpur
- Trinity Wellness Condominium Kuala Lumpur
- Hermon House Kuala Lumpur
- Bon Estate, Bon Kiara

MALTA

- Corinthia Hotels

OMAN

- Mahfooth Al Ardhi Sohar Club,
- Medinat Al Alam Villa, HE Mohammed Bin
- New Royal Palace, Muscat

POLAND

- City Park Hotel, Krakow
- Wolverton Park, Warsaw

QATAR

- Al Tawadi
- Al-Tayeb Villa Project
- Al-Wadji Palace, Doha
- Maryam Al Kuwari
- Villa Project, Doha

ROMANIA

- Hotel Laki, Mamaia

SPAIN

- Club Vista Verde Holiday Village, Maspaloma
- Hotel Campo Des Las Naciones, Madrid

TURKEY

- Feza Apartments Istanbul

NIGERIA

- Citilodge Hotel
- Victoria Mall Plaza, Lagos



BESPOKE VANITY UNITS

- Solid surface vanity units and other bespoke fabrications available
- A huge range of colours and finishes
- Available with and without undermount sink
- Shape options for undermount sinks, including bespoke shapes
- Solid surface products can be combined with other materials to create towel shelves and other features
- All products created from initial drawings



WORKING WITH

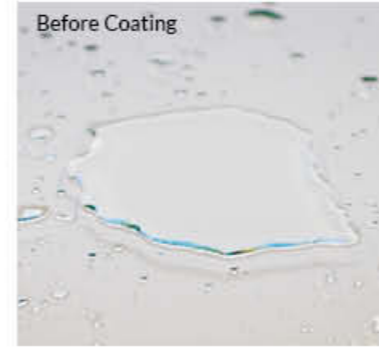
Pod MANUFACTURERS

Offsite manufacturing is now a significant part of the construction chain in almost every developed market around the world. Roman have been dealing with Pod manufacturers for many years and we are well versed in their specialist installation requirements - and often delivery requirements. We work with a wide range of Pod manufacturers on four continents.

We also work with other specialist manufacturers such as cruise ships, caravan and yacht manufacturers. Our bespoke capabilities can cater for all such needs and requirements whatever the volume or complexity.



Hotel built using off-site manufactured pods



Before Coating



After Coating

ULTRA CARE

All Roman's enclosures and bath screens are pre-coated with Roman Ultra Care, our own unique glass protection system. Pre-coated glass protection systems will always diminish in their effectiveness over time, depending on how often the shower is used and how often it is cleaned. Unlike other systems, Roman Ultra Care in a bottle can be used in tandem with the pre-coat to build up the effectiveness and make it stronger the more you clean.

This results in the protected surface remaining easy to clean by simply applying a mild detergent and wiping with a damp cloth or using a Roman Shower Blade.

By topping up the glass protection system with Roman Ultra Care in a bottle every time you clean, you can significantly reduce the amount of time required to clean your enclosure and bathroom surfaces. Most importantly, you can considerably prolong the life of your Roman product and at the same time do your bit for the environment by eliminating the use of harsh and damaging cleaning products.

946ml Bottle Code: RUC03

Buy online at www.romanathome.com



Make cleaning your bathroom easy with our

Shower, Tile & Bath Restoration and Maintenance Kit

- Eliminates hard water and soap scum build-up
- Clean and protect your shower in minutes
- Restore discoloured glass and maintain the sparkle of your bathroom

3 Step System includes:

- Ultra Scrub**
 Surface Stain Cleanser
 Designed to effectively and easily clean your bathroom surfaces, including Glass, Porcelain, Ceramics and other hard surfaces.
 Developed to remove the build-up of minerals, rust, soaps, oils and limescale but without damaging the surface.
- Ultra Shield**
 Glass and Surface Stain Cleanser
 Formulated to clean and protect. Ultra Shield can be used on your bathroom surfaces to create a water, soil and stain repellent barrier coating which prevents water, soil and grime from sticking for easier cleaning. This barrier is renewed with each use.
- Ultra Care**
 Glass and Surface Protector
 For a long lasting sparkle on bathroom and shower surfaces. Ultra Care is the ultimate surface protector that repels the build-up. Also available in large bottle for ongoing aftercare.



Kit code: RUC14

For details of your nearest stockist please contact Roman Customer Relations on 01325 328033 or buy online at www.romanathome.com

GLASS OPTIONS

You can choose any glass finish you would like including clear, frosted, patterned and digitally printed glass. If you are looking for a specific design or motif to be added to the glass, we can accommodate this. We can also offer low iron, mirrored, curved or heat soaked glass. A large variety of coloured glass "tints" can also be produced if desired.

Let us know what glass thickness you would like. The standard on these styles of products is 8mm and 10mm thick glass, but we can work within your requirements. Across our series of standard enclosures we offer 4mm to 10mm thick glass products, so we regularly work with all of these thicknesses. We can advise as required.

- All Roman Bath Screens and Enclosures are manufactured using toughened safety glass which complies to **BSEN12150** (EN14428 when curved).
- All Roman Bath Screens and Enclosures are tested in accordance with **BSEN14428** - shower enclosures, functional requirements and test methods.
- Roman's **toughened glass is completely safe** for use in our Shower Enclosures and Bath Screens; providing our products are installed according to our guidelines.



Clear Glass



Fluted Glass



Black Grid Glass



Frosted Glass



Digitally Printed Glass



Mirrored Glass



METAL FINISH OPTIONS

In addition to the multitude of colour and finish options available in glass and Corian, Roman can also now offer a choice of colour options for metal finishes.

We have carefully matched the aluminium extrusions to coordinate as closely as possible with the Brassware finishes and although being different materials and very different manufacturing processes, the end result is a huge and unrivalled range of stunning complementary finishes.

These finishes are for major developments and Projects only and therefore volumes and lead times are to be agreed on a project by project basis. Any extra colours can be produced upon request to agreed volumes.



Polished Chrome



Brushed Chrome



Polished Nickel



Brushed Nickel



Polished Brass



Brushed Brass



Polished Gold Optic



Brushed Gold Optic



Polished Black Chrome



Matt Black



Matt White



Gun Metal

LEISURE SOLUTIONS

Due to our unique manufacturing capability we're delighted to introduce an addition to our bespoke product service - Roman Leisure Solutions.

Our Leisure Solutions are ideal for hotel spas and leisure complexes for modest showering and changing cubicles. There is a range of hardware available including locks; towel rails; and robe hooks, along with glass options such as frosted or patterned. We offer flexibility in size, design and number of cubicles. This new concept has been developed specifically for architects, designers and specifiers working on significant projects. Uniquely it allows you to pick and choose every single part of your product solution, from your hardware to your seals and glass design. Allowing you to build a product to totally suit your individual project.

Colour options for hardware



Roman have developed urinal partitions in 10mm and 12mm toughened safety glass. The standard products come with an all over etch or frosted finish for privacy. The hinges are extremely durable stainless steel. Whilst the standard options are shown we can clearly design partitions to match any design requirement and also utilise solid surface sheet if required in place of glass.



Glass to Wall Lock



Glass to Glass Lock



Shower/toilet door lock



Coat Hook



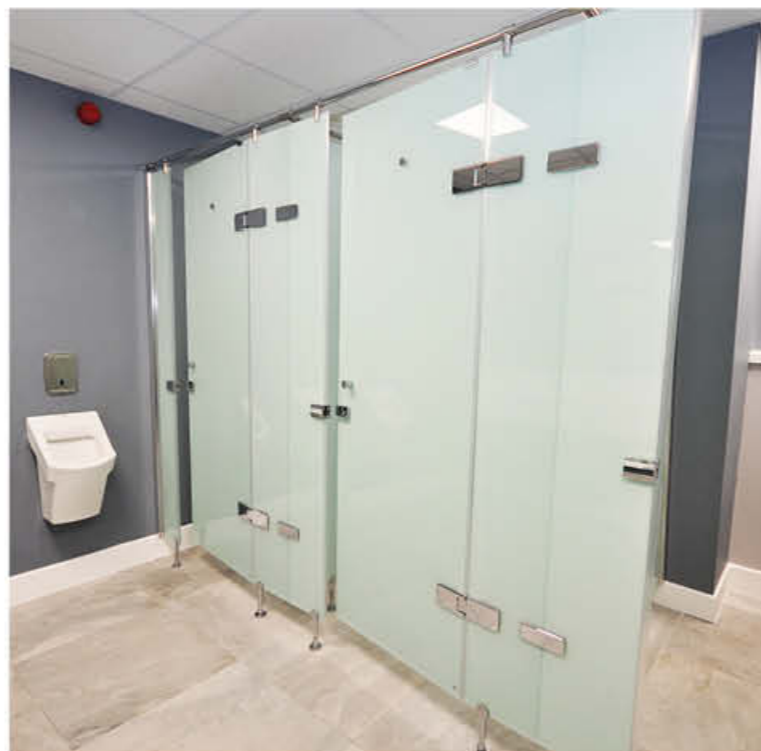
Toilet Partition Bracket



Toilet Partition Bracket



Adjustable Foot Assembly



SHOWER TRAYS

Our luxury range of Shower Trays offers the user a choice of installations and shapes and sizes depending on the desired finish.

Our range of low profile Shower Trays are manufactured from solid surface material with a gel coat finish and are naturally Anti-Slip, to the highest standard.

The tray waste is available in a choice of colour finishes to match your bathroom's brassware and shower enclosure - Matt Black, Brushed Brass, Brushed Nickel and White. Polished Chrome Waste included with Tray,

The Infinity Slate Shower Trays have an authentic slate finish with a textured surface and a stylish load bearing linear waste cover.



Chrome Waste included with Tray



Anti-Slip Trays

Height: 40mm

Size(mm):

700 × 700	900 × 700	1000 × 900	1200 × 900	1500 × 800	1700 × 700
760 × 760	900 × 760	1100 × 800	1300 × 800	1500 × 900	1700 × 760
800 × 800	900 × 800	1200 × 700	1400 × 700	1600 × 700	1700 × 800
900 × 900	1000 × 700	1200 × 760	1400 × 800	1600 × 800	1700 × 900
800 × 700	1000 × 800	1200 × 800	1400 × 900	1600 × 900	1800 × 800



Anti-Slip Quadrant Trays

Height: 40mm

Size(mm):

800 × 800	900 × 900
1000 × 800	1200 × 800
	1200 × 900



Neo Angle Trays

Height: 40mm

Size(mm):

900 × 900	1200 × 900
-----------	------------



Innov8 Walk-in Shower Tray

Height: 50mm

Size(mm):

1700 × 700



Waste included with tray



Infinity Slate Tray

Height: 40mm

Size(mm):

800 × 800	1000 × 800	1200 × 800	1200 × 900	1400 × 800	1400 × 900
1500 × 800	1600 × 800	1600 × 900	1700 × 800	1800 × 800	



HINGE OPTIONS

Manufactured from chrome plated brass, our collection of hinges ensure a high quality finish and smooth opening action.

Our range of hinges include:

- Glass to glass options
- Glass to wall
- 180° functionality (both inward and outward opening)
- Inward opening and outward opening
- Unrivalled Soft Close options

All are presented in a variety of shapes and sizes to help you achieve the look you aspire to – many options feature self-closing sprung hinges.

Colour options for hardware







Curved Glass to Wall Hinge

Opening: Inward and/or Outward Opening



Curved Glass to Profile Hinge

Opening: Outward Opening only



Square Glass to Wall Hinge

Opening: Inward and/or Outward Opening



Hydraulic Soft Close Hinge

Opening: Inward and/or Outward Opening



Hydraulic Soft Close Glass to Glass Hinge

Opening: Inward and/or Outward Opening



Glass to Glass Hinge

Opening: Outward Opening to 90°



Square Glass to Profile Hinge

Opening: Outward Opening only



Square Bath Hinge

Opening: Adjustable Outward Opening



Bath Screen Hinge

Opening: Outward Opening to 90°



Square Glass to Wall Hinge

Opening: Inward and/or Outward Opening



Square Glass to Glass Hinge

Opening: Inward and/or Outward Opening



Square Glass to Glass Hinge

Opening: Inward and/or Outward Opening



Bath Screen Hinge

Opening: Inward Opening only



Bath Screen Hinge

Opening: Outward Opening only



Glass to Glass Hinge

Opening: Outward Opening only



Curved Glass to Glass Hinge

Opening: Outward Opening to 90°



Curved Glass to Glass Hinge

Opening: Inward and/or Outward Opening

BRACKET FIXINGS

MANUFACTURED FROM THE HIGHEST QUALITY MATERIALS

Our bracket fixings are manufactured from high quality chrome plated brass, ensuring quality right down to the finer details. These are finished in; chrome, brushed nickel, polished nickel, brushed brass or matt black, but for volume orders we can accommodate any colour you would like.

If the fixing style and finish you are looking for is not pictured here, please contact us with your requirements as this is only a small sample of what we have available.

Colour options for hardware



90° Square Glass to Wall Bracket



90° Square Glass to Glass Corner Bracket



135° Square Glass to Glass Neo-Angle Bracket



90° Curved Glass to Wall Corner Bracket



90° Curved Glass to Glass Corner Bracket



135° Curved Neo-Angle Glass to Glass Bracket



Curved Ceiling Bracket



Square Ceiling Bracket



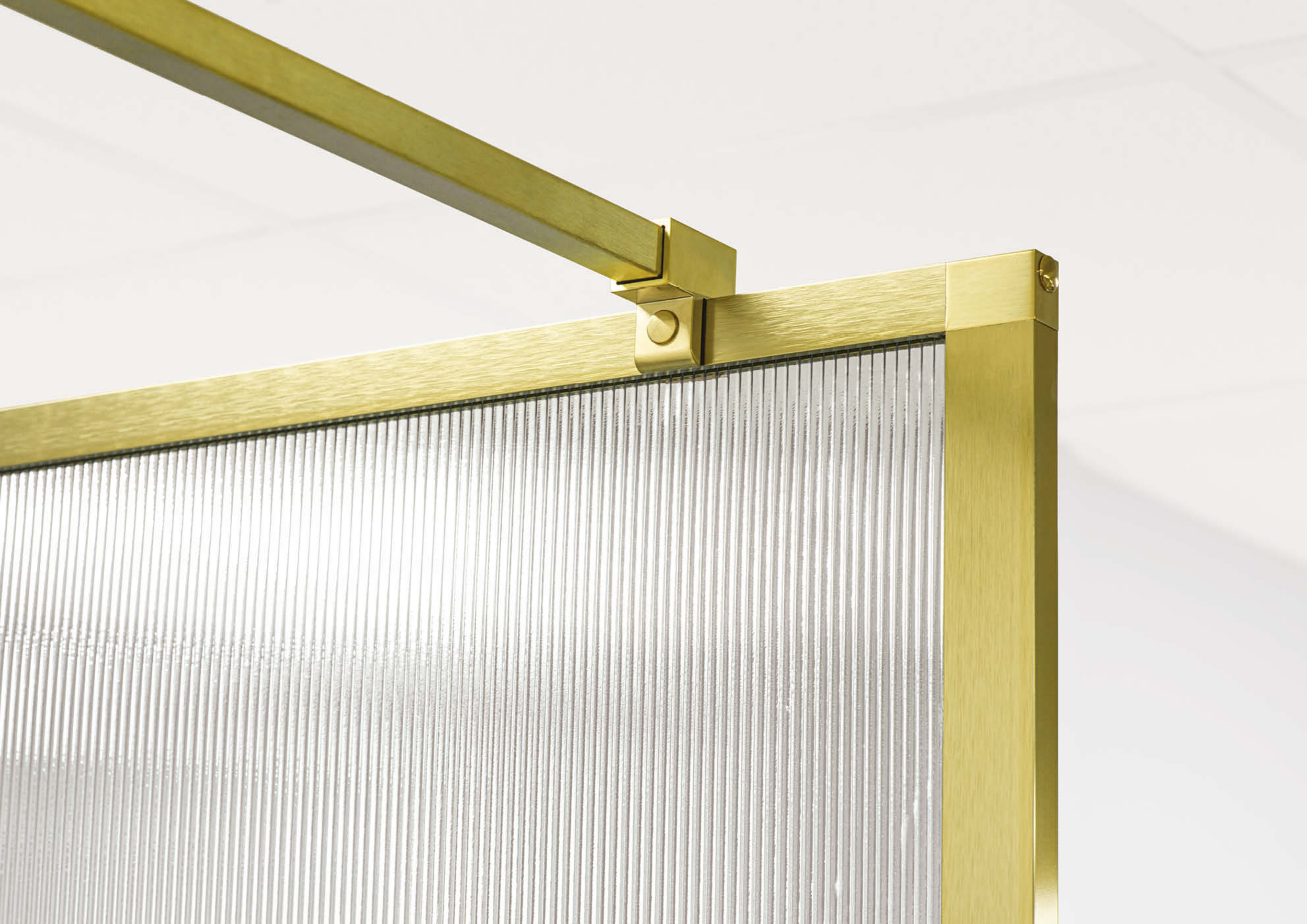
Wall Bracket



90° Curved Glass to Wall Corner Bracket



Square Double Enclosure Partition Bracket



DESIGN STATEMENT

Whether you would like a "statement" handle or are looking for something a bit simpler, with our range you can pick something to perfectly complement your specification. For a totally minimalist look, we can even completely eliminate the handle and leave a designer hole in the glass as an alternative. Our handle range also includes options that double up as a towel rail - perennially popular in the Hotel sector.

Our selection of handles are manufactured from high quality chrome plated brass and are finished in chrome, brushed brass, brushed or polished nickel, or matt black. If the style and finish you are looking for is not pictured here, please contact us with your requirements as this is only a small sample of what we have.

Colour options for hardware



HANDLE OPTIONS



HANDLE OPTIONS AS A TOWEL RAIL







Minimal Pull



Matt Black

Polished Chrome

Brushed Brass



Matt Black

Polished Chrome

Brushed Nickel

Polished Nickel

Brushed Brass



Finger Pull in Glass



Square Towel Rail Handle



TRound Towel Rail Handle



Large Square Handle



Small Square Handle



Large Designer Handle



Square Towel Rail Handle



Towel Rail Handle



Towel Rail Handle with Rubber Stop



Medium Square Handle



Colour Range Handle



Medium Designer Handle



Pull Handle - Single Hole Fix



Square Pull Handle



Finger Pull Handle Cover Assembly



Innov8 Handle



Innov8 Handle Optional Inward rubber stopper



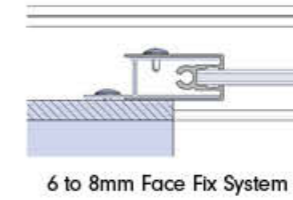
Square D Handle

ALUMINIUM WALL PROFILES

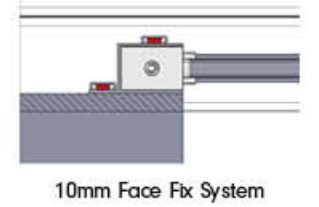
If you are looking for a totally minimalist finish, or alternatively would like a quick and straight forward installation, then the wall profile you can pick can be crucial. We offer a variety of profiling systems; from angled profiles, for angled glass; through to profiles that can be channelled into the wall so only the glass is visible. Our Wall Profile System offer options to suit a variety of door styles including, hinged and sliding doors, along with wetroom panels. We always recommend the use of our discreet profiling to enhance performance and offer on-site adjustment.

If the component and finish you are looking for is not pictured here, please contact us with your requirements as this is only a small sample of what we have available.

Colour options for hardware



6 to 8mm Face Fix System



10mm Face Fix System



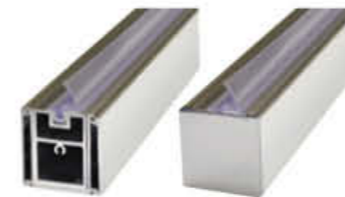
Liberty Profile System 8/10mm



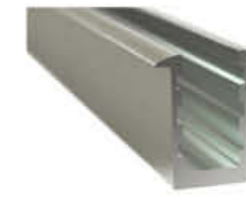
8mm Face Fix Wall Profile



10mm Face Fix Wall Profile



Hinged Alcove Seal System
Cover cap supplied



10mm Concealed Glass Wall Channel



8mm Concealed Glass Wall Channel



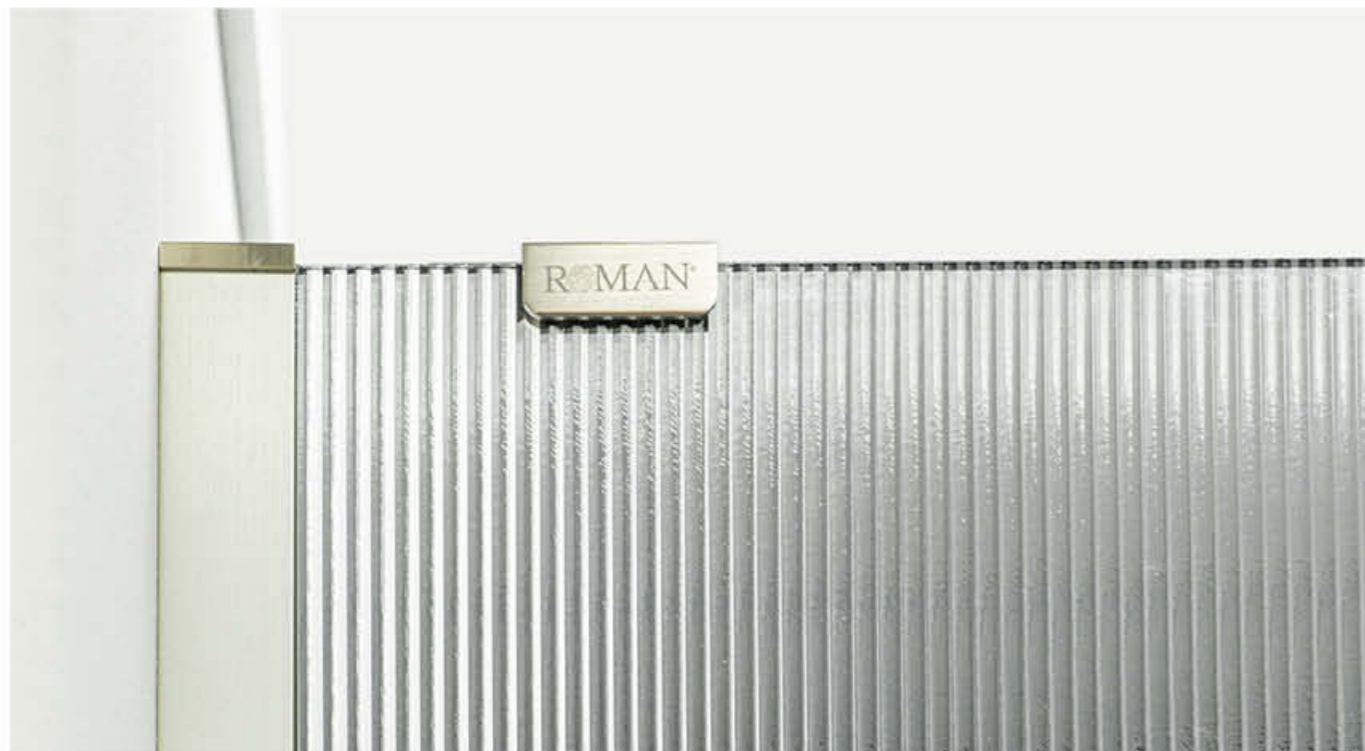
Bottom Door Sealing Strip



Concealed Glass Floor Channel



Glass Panel Wall Profile System



ROUND BRACING

Our selection of Bracing Systems allow you to keep your Shower Enclosure, Bath Screen or Wetroom Panel sturdy, with a look and overall finish that suits your space. We provide the bracing bars to your exact sizing specification, and these can be trimmed to size on site (standard sizes are illustrated).

The bracing bar systems are all manufactured using chromed brass. Largely we supply these with a chrome finish, but if you would like a specific colour we are able to accommodate this for volume projects.



Back to Wall Bracing Kit



Low Level Back to Wall Bracing



Ceiling Bracing



Floor to Ceiling Brace - Round



Brace Bar Wall Joint



135° Brace Bar Wall Joint



Brace Bar 90° Joint



Neo Angle 135° Bracing Bracket



Brace Support



Wetroom Panel Support Foot

SQUARE BRACING SYSTEMS

Colour options for hardware



Floor to Ceiling Bracing Kit



LH Brace Bar Assembly



RH Brace Bar Assembly



Decem Brace Bar



Ceiling Bracing Kit



Back to Wall Bracing Kit



T Bracing Kit

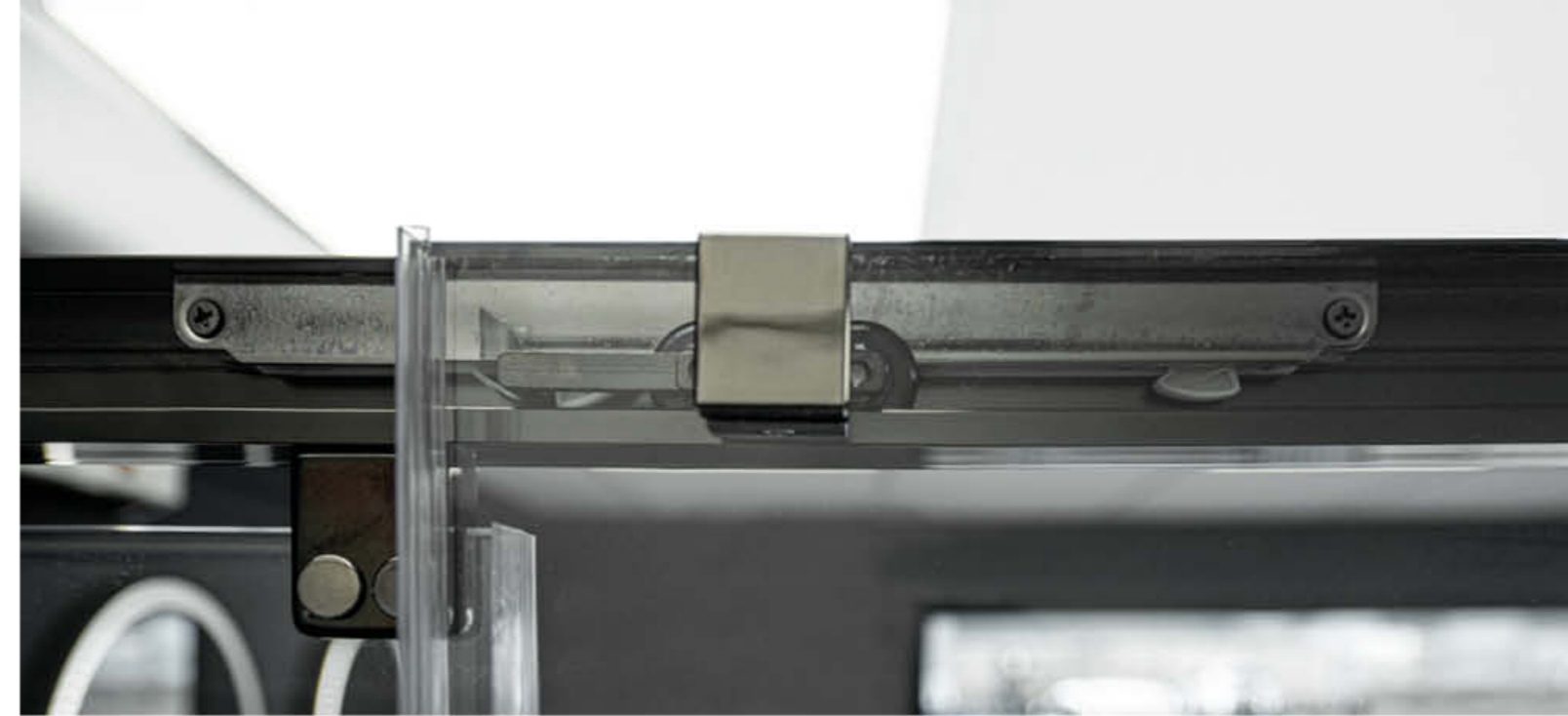


SLIDING DOOR SYSTEMS

Our Sliding Door Systems allow you to create the look you seek, with a smooth action door that glides with ease with a "soft close" style sprung stop. The components are manufactured from chromed brass and are available in a chrome finish.

If the Sliding Door System style and finish you are looking for is not pictured here, please contact us with your requirements as this is only a small sample of what we have available.

We have incorporated soft close Spring System into a large number of our sliding door systems. These either softly cushion a heavy door when closing or carefully guide a sliding door into its open or closed position.



Soft Close Mechanism

Colour options for hardware



Liberty LH Level Access
Bottom Guide



Liberty RH Level Access
Bottom Guide



Spring Release Wheels



Haven LH Level Access
Bottom Guide



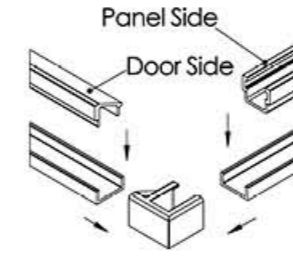
Haven RH Level Access
Bottom Guide



Bottom Guide Assembly

SEALING SYSTEMS

We offer a range of Sealing Systems to suit whatever enclosure style you choose. We will recommend which seal is compatible with your chosen product type, whether it is a hinged door or sliding door configuration that you choose. The more popular options are showcased in this section - many other options are available as required. Our Water Safe System (pictured) allows frameless Enclosures to offer water integrity that has traditionally only been offered by standard Enclosures with no caveats regarding water pressure or direction.



WATER SAFE SYSTEM

Whilst many of our products are giving a truly minimal look and feel, there is no need to compromise on the water integrity. The discreetly designed water safe system slots beautifully into profiles and is rigidly held together with mouldings. This then offers a minimalistic look with the reassurance of total water integrity.



Vertical Bubble Seal



180° Seal



Deflector Seal



90° Seal



Vertical Seal inc cut out



8mm 90° degree seal



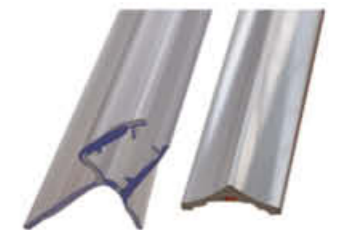
8mm 90° degree seal



8mm Deflector Seal - 1000mm



8mm 180° degree seal



8mm 90° degree seal

ACCESSORIES



Practical & stylish storage

Double Hanging Basket with Hooks

Spacers supplied so basket can be hung directly onto the glass edge

Width: 220mm
Depth: 125mm
Height: 765mm

Colour Options: Polished Chrome, Matt Black, Brushed Brass

Image Shown Code: RSB01



Depth (mm)	Width (mm)	Height (mm)	Colour	Code
125	220	765	Polished Chrome	RSB01
125	220	765	Matt Black	RSB01B
125	220	765	Brushed Brass	RSB01BR

Stepped Soap Basket

Width: 260mm
Depth: 131mm
Height: 57 / 29mm

Colour Options: Polished Chrome

Image Shown Code: RSB03



Depth (mm)	Width (mm)	Height (mm)	Code
131	260	57 & 29	RSB03

Large Rectangular Shower Basket

Width: 260mm
Depth: 120mm
Height: 95mm

Colour Options: Polished Chrome

Image Shown Code: RSB06



Depth (mm)	Width (mm)	Height (mm)	Code
120	260	95	RSB06

Double Corner Shower Basket with Hooks

Width: 293mm
Depth: 224mm
Height: 399mm

Colour Options: Polished Chrome, Matt Black, Brushed Brass

Image Shown Code: RSB05



Depth (mm)	Width (mm)	Height (mm)	Colour	Code
224	293	399	Polished Chrome	RSB05
224	293	399	Matt Black	RSB05B
224	293	399	Brushed Brass	RSB05BR

Large Curved Corner Basket

Width: 296mm
Depth: 224mm
Height: 73mm

Colour Options: Polished Chrome, Matt Black, Brushed Brass

Image Shown Code: RSB02BR



Depth (mm)	Width (mm)	Height (mm)	Colour	Code
224	296	73	Polished Chrome	RSB02
224	296	73	Matt Black	RSB02B
224	296	73	Brushed Brass	RSB02BR

Large 'L' Shaped Corner Shower Basket

Width: 255 / 270mm
Depth: 115 / 125mm
Height: 99mm

Colour Options: Polished Chrome

Image Shown Code: RSB04



Depth (mm)	Width (mm)	Height (mm)	Code
115/125	255/270	99	RSB04

Roman Shower Blade (includes spare blade part)

Colour Options: Polished Chrome, Matt Black, Brushed Brass

Image Shown Code: RSB0100

Colour	Code
Polished Chrome	RSB0100
Matt Black	RSB0100B
Brushed Brass	RSB0100BR



Double Rectangular 'single wall' Shower Basket with Hooks

Width: 215mm
Depth: 106mm
Height: 391mm

Colour Options: Polished Chrome, Matt Black, Brushed Brass

Image Shown Code: RSB07



Depth (mm)	Width (mm)	Height (mm)	Colour	Code
106	215	391	Polished Chrome	RSB07
106	215	391	Matt Black	RSB07B
106	215	391	Brushed Brass	RSB07BR

Roman's Bespoke Service allows you to build a made to measure Shower Enclosure, Wetroom Panel or Bath Screen, to perfectly suit your available space.

Send us your showering area and ideas and we can help you create a unique environment for yourself.



- Made to measure items which fit almost anywhere
- All products made in accordance with your own measurements
- We endeavour to provide fast and efficient answers to all your questions
- Cost effective solutions
- Many designs to suit all tastes
- Measure and fit service available

Bespoke Services available:

- Reduced height
- Reduced width
- Clear, frosted or printed glass
- Angled/Shaped glass

To order a Bespoke Service all you have to do is simply choose which product you would like, then follow these six easy steps:

1. Take your drawings to your nearest retailer who will fax them to Roman. For your nearest retailer contact Roman Customer Relations on 01325 328033 or visit www.roman-showers.com
2. Roman will then send a quotation to your retailer for them to discuss with you
3. If you are happy with this quotation Roman will produce a drawing to illustrate what your final product will look like. Note: Roman will make all drawings in accordance to your measurements and unless otherwise requested, an adjustment allowance will be included. Please specify your adjustment allowance prior to ordering.
4. Roman will then fax the drawing to your retailer who will pass this on to you. This drawing will be in the form of a fax back agreement for you to sign*.
5. Once Roman receives the agreement work will begin on your product.
6. You will receive your product within 5-6 weeks.

*Once this agreement is signed you will be liable for any changes should you cancel your order.

Guarantee Guide

Roman shower enclosures have been tested and fully conform to the scope and relevant characteristics of BS EN14428:2015 (Shower Enclosures - Functional requirements and test methods), to meet the requirements of the mandate given under the EU Construction Product Directive (89/106/EEC).

As a result of full compliance to the directive and harmonized standard; Roman shower enclosures carry the 'CE' mark and are accompanied by a declaration of performance. (Available to view on www.roman-showers.com)

The CE marking indicates Roman shower enclosures conform to all essential requirements of European health and safety and environmental protection legislation. The conformity is mandatory, and allows Roman products to be legally placed on the market anywhere in the European Economic Area.

Any newly manufactured products from the 1st January 2021 will have the new UKCA mark applied as per government guidelines.

The UKCA (UK Conformity Assessed) marking is a new UK product marking that will be used for goods being placed on the market in Great Britain (England, Wales and Scotland). It covers most goods which previously required the CE marking.

Please note: this will only apply to any new products manufactured from 1st January 2021, any products held in stock will still be able to display the CE mark.

Additionally all Roman trays fully conform to EN14527:2016.



Important Product Details

- Enclosures and screens carry a Lifetime manufacturer's guarantee if products are installed according to the installation instructions - see guarantee criteria to the right.
- Simple and clear installation instructions are included with all Roman Products.
- Roman products are available for Virtual Worlds design service. For more information contact Roman Customer Relations on 01325 328033.
- Any guarantee variations are indicated separately.
- All guarantee forms supplied with installation instructions must be completed and returned to Roman within 60 days to validate the lifetime guarantee otherwise only a statutory 12 month guarantee will apply.
- All Roman Bath Screens and Enclosures are manufactured using toughened safety glass which complies to BSEN12150.
- All Roman Bath Screens and Enclosures are tested in accordance with BSEN14428 - shower enclosures, functional requirements and test methods.
- Roman's toughened glass is completely safe for use in our shower enclosures and bath screens; providing our products are installed according to our guidelines.
- It is important to note, that the glass must not be mounted or 'pinched' in such a way that would cause a stress point to develop in the glass. In addition, it must not be subjected to any sharp impact or severe temperature fluctuation which may also cause a stress point to develop in the glass.
- Roman's toughened glass is physically and thermally significantly stronger than standard glass. However a significant impact (or stress as outlined above) can cause toughened glass to break. In the event of breakage, toughened glass will break safely into small fragments in line with all relevant standards.
- All heights quoted for enclosures and bath screens are from the top of the shower tray or bath.
- All fixings are hidden on Roman products.
- The term "Silver" and "Nickel" describes the colour of the aluminium finish. No silver metal is included in any Roman products.
- All fixings and pivot pins are manufactured from stainless steel - this adds great strength and durability to Roman products.
- All seals and gaskets on Roman products are manufactured from colourless PVC.
- Roman over-bath products are not designed for baths with shaped or stepped fronts or integral soap dishes.
- The design rights of these products are owned by Roman Limited. All rights reserved.
- Roman recommends only the use of Roman Trays with Roman Shower Enclosures.
- For compatibility of Roman enclosures with steam generators please contact Roman Customer Relations for advice on 01325 328033.
- Where indicated that products are suitable for use with steam generators, this refers to the performance of the product components. We do not however suggest that the product will have complete steam integrity.
- Due to the nature of wetroom panel products, water integrity cannot be guaranteed. Please consult your installer.
- We make every effort to ensure that your product reaches you in perfect condition. However, please be advised that all toughened glass panels are not covered by our guarantee if installed incorrectly or are subject to misuse. Roman's toughened glass is physically and thermally stronger than standard glass. However any significant impact may cause the glass to shatter in as safe a manner as possible and in accordance with the British and European standard (BS EN14428).

Guarantee

Roman Ltd. guarantees all Shower Enclosures, Bath Screens and Roman Solid Surface Trays against faulty materials or manufacture for LIFE, provided they have been installed, used and maintained in accordance with our instructions.

All Roman product guarantees must be completed and returned within 60 days of purchase to validate the relevant guarantee. Failure to meet this deadline will result in a statutory 1 year guarantee on all products.

Should a claim arise, Roman Ltd. Customer Relations will investigate the issue. As part of this investigation we request that the following conditions be satisfied:

1. Proof of purchase at the time of the claim.
2. The guarantee applies to the original purchaser only and is non transferable.
3. The product has been fitted/installed in accordance with Roman Ltd. fixing instructions, local bylaws and general good plumbing practice
4. The product has been maintained and cared for in accordance with our instructions (including regular and appropriate cleaning).

If in our opinion the product has been modified, misused, neglected, wilfully or accidentally damaged, we can accept no responsibility for failure.

Roman Ltd. or its representatives must be given the opportunity to inspect the product in the installed condition. Callouts may be chargeable depending upon circumstances. Should any products included in the Lifetime guarantee be used for Commercial use i.e. leisure clubs, schools, hospitals, student accommodation, hotels or residential homes, only a 5 year guarantee will be applicable.

If in our opinion the product fails due to faulty materials or manufacture and that the conditions above have been met, Roman Ltd. will arrange for a specialist Roman Technical Sales Representative to repair or replace that item at our option.

Roman Ltd. believes in continuous improvement. If in our opinion the product has failed under the terms of the Guarantee and a replacement is offered but identical goods are no longer available, Roman Ltd. will endeavour to replace it with our nearest equivalent product. For countries outside of the UK and Republic of Ireland, where a product has failed due to faulty materials or manufacture, a replacement product or product part will be offered only.

Should Roman Ltd. carry out work as a result of a claim but subsequently it is revealed that the product has been abused or improperly installed, we reserve the right to charge the customer for the expense incurred.

The liability of Roman Ltd. is limited to the product supplied by Roman Ltd. and does not extend to consequential loss or damage arising from the defective product.

This Guarantee, which is effective for products purchased after February 1st 2006, states our entire liability and is offered to customers acquiring our products as consumers, not in the course of trade or business. Ex displays or products reinstalled from their original position are not covered under this guarantee.

Non glass or metallic parts (e.g. seals) are subject to normal wear and tear through usage and are therefore covered on all products for 1 year from installation. Roman products not included in the Lifetime Guarantee are Roman Acrylic Trays which are covered for 1 year.

Roman Ultra Care pre-coat is not covered by this guarantee and it must be maintained by applying Ultra Care from a bottle on an ongoing basis.

Commercial projects with specific guarantee requirements can be subject to negotiation and agreement on a project by project basis. Any such agreements must be confirmed in writing prior to product supply or commencement in project works.

This guarantee does not affect your statutory rights.

This guarantee is wholly applicable in the U.K. and Republic of Ireland - export conditions as indicated

Roman Ltd
Whitworth Avenue, Aycliffe Business Park,
County Durham, DL5 6YN
Tel: 01325 311318 Fax: 01325 319889
www.roman-showers.com

ROMAN HEAD OFFICE

Whitworth Avenue,
Aycliffe Business Park,
County Durham,
DL5 6YN,
England, UK.

GENERAL RECEPTION

Phone: +44 (0) 1325 311318
UK CUSTOMER RELATIONS:
Phone: +44 (0) 1325 328033
Email: custserv@roman-showers.com

UK SALES

Phone: +44 (0) 1325 328034
Email: orders@roman-showers.com

INTERNATIONAL SALES/CUSTOMER RELATIONS

Phone: +44 (0) 1325 327740
Email: international@roman-showers.com
www.roman-showers.com/international

ROMAN - IRELAND

W10F
Ladytown Business Park
Naas
County Kildare
Ireland
Phone: +353 (0) 45 408 118
Email: irelandsales@roman-showers.com

ROMAN - ASIA PACIFIC

Roman Asia Sdn Bhd (941603-K)
No.6, Jalan Olivin, Taman Industri Sungai
Purun,
43500 Semenyih, Selangor, Malaysia.
Phone: +60 (0) 3 8727 8816
Email: romanasia@roman-showers.com